

This Place Is Held Dear
Rebecca Chesney
Super Slow Way 2022



This Place Is Held Dear (Pocket Park)

Rebecca Chesney

Commissioned by Super Slow Way (SSW) as part of the Linear Park pilot project. Owned by Hyndburn Borough Council, the park is located alongside the Leeds & Liverpool Canal on Bridge Street in the town of Church in Lancashire. The whole plot is approximately 600m².

In summer 2020 SSW artist-in-residence Rebecca Chesney identified the park plot of land as suitable for replanting and enhancement. She was commissioned in 2022 to undertake the development of the park by introducing native wildflower and tree species for pollinators and to make it a more pleasant place to stop and take a break. In Our Nature, a wildlife charity, provided guidance and advice throughout the project.



Left: *Will You Marry Me?* Tree graffiti on a Swedish whitebeam on the plot.

This place is held dear to someone.



Above and below: the park in summer 2020



Above and below: the park in January 2022





Site Preparation
March / April 2022

The first step was to cut the whole plot edge to edge and remove the cuttings from the site. This cut revealed the edges of the paths that had been hidden for years. The work was carried out by a local contractor.

It was decided the best way to introduce the plug plants into the plot would be to remove approximately 400m² of turf which was cut, hand rolled and removed off site via skips hired from a local company.



Planting wild flowers April 2022

Having spent time documenting and noting all the plants growing along the canal in the area, Rebecca made a list of native wildflowers and tree species to be introduced on the plot with particular emphasis on plants that provide forage and habitat for bees and other pollinators.

A combination of plug plants (2000 plants) and seeds were used with flowers starting to bloom within 8 - 10 weeks of planting. All the plug plants and seeds were supplied by Habitat Aid and are pesticide and peat free, grown in the UK from UK stock. A number of volunteers helped with the planting of the wildflowers.





Tree planting

4 native trees were planted in March 2022 on the edges of the plot to add to the wildflowers:

2 x wild cherry trees chosen for the blossom
2 x rowan trees chosen for the berries

The trees already growing on the plot were checked for disease with broken and lower branches removed. Broken tree stakes were also removed from the site.



Above: yarrow plug plant establishing in the plot April 2022

Below: the plot in May 2022





Above: red clover July 2022

Below: selfheal July 2022, common toadflax July 2022. Opposite: birdsfoot trefoil July 2022





Benches

There are three benches on the plot. Hollins High School students helped wire brush them down, varnish the wood and paint the metal. One bench had a broken wooden slat replaced.

Opposite page: the benches being used since being renovated.





Mural

A 19m long wall, owned by Best Pneumatic Systems, runs along the length of the plot. Hollins High School students helped to scrub the moss and mould off the wall and to scrape the moss off the path in April 2022.

A mural design was created by Rebecca to reflect the variety of colours of the flowers on the plot. A pixel pattern comprising 392 different colours was painted onto the upper wall with a complimentary colour used to block the lower wall. The mural was created in August 2022 with the help of a number of volunteers.







Above: ox-eye daisy, wild carrot and cornflower August 2022
Below: view of the wildflowers against the newly painted wall August 2022



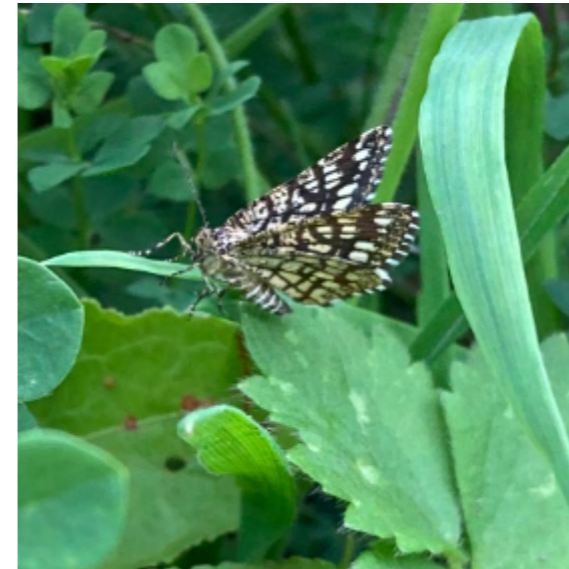
Above: looking across the plot towards the Leeds Liverpool Canal July 2022
Below: yarrow and red clover July 2022





Insects and pollinators noted on the plot in 2022:

- Buff-tailed Bumblebee *Bombus terrestris*
- Common Carder-bee *Bombus pascuorum* (top right)
- White-tailed Bumblebee *Bombus lucorum*
- Red-tailed Bumblebee *Bombus lapidarius* (top left)
- Honeybee *Apis mellifera*
- Small Tortoiseshell butterfly *Aglais urticae*
- Green-veined White butterfly *Pieris napi*
- Small Skipper *Thymelicus sylvestris* (bottom left)
- Cinnabar moth *Tyria jacobaeae*
- Wasp *Vespula vulgaris*
- Hoverfly (a number of different species)
- Seven-spot Ladybird *Coccinella 7-punctata* (bottom opposite page)
- Common Blue Damselfly *Enallagma cyathigerum* (right)
- Blue-tailed Damselfly *Ischnura elegans*
- Brown Hawker dragonfly *Aeshna grandis*
- Latticed Heath *Chiasmia clathrata* (middle opposite page)
- Common Woodlouse *Oniscus asellus*
- Garden Spider *Araneus diadematus*
- Common Red Soldier Beetle *Rhagonycha fulva* (top opposite page)
- Fly (a number of different species, bottom right)
- Green Shieldbug *Palomena prasina*



Plant Species on the plot 2022:
(*planted flowers)

- Common toadflax *Linaria vulgaris* *
- Cornflower *Centaurea cyanus* *
- Selfheal *Prunella vulgaris* *
- Yarrow *Achillea millefolium* *
- Red Clover *Trifolium pratense* *
- Bird's-foot-trefoil *Lotus corniculatus* *
- Ox-eye daisy *Leucanthemum vulgare* *
- Wild Carrot *Daucus carota* *
- field scabious *Knautia arvensis* *
- Meadow Buttercup *Ranunculus acris* *
- Foxglove *Digitalis purpurea* *
- Viper's bugloss *Echium vulgare* *
- Cowslip *Primula veris* *
- Lady's Bedstraw *Galium verum* *
- Knapweed *Centaurea nigra* *
- White Clover *Trifolium repens*
- Rosebay *Chamerion angustifolium*
- Ivy *Hedera helix*
- Bramble *Rubus fruticosus* agg
- Common Nettle *Urtica dioica*
- Dandelion *Taraxacum officinale*
- Daisy *Bellis perennis*
- Broad-leafed dock *Rumex obtusifolius*
- Ragwort *Jacobaea vulgaris*
- Creeping Buttercup *Ranunculus repens*
- Cow Parsley *Anthriscus sylvestris*
- Redshank *Persicaria maculosa*
- Black Medick *Medicago lupulina*
- Woody Nightshade *Solanum dulcamara*
- Cinquefoil *Potentilla reptans*
- Groundsel *Senecio vulgaris*
- Shepherd's-purse *Capsella bursa-pastoris*
- Ribwort plantain *Plantago lanceolata*
- Forget-Me-Not *Myosotis arvensis*
- White dead-nettle *Lamium album*
- Canadian Fleabane *Erigeron canadensis*
- Crocus sp
- Daffodil sp

Trees on the plot (*planted trees):

- Wild cherry *Prunus avium* *
- Rowan *Sorbus aucuparia* *
- Ash *Fraxinus excelsior*
- Lime *Tilia x europaea*
- Swedish whitebeam *Sorbus intermedia*
- Silver Birch *Betula pendula*

Birds on the plot (*seen above or heard from the plot):

- Robin *Erithacus rubecula*
- Blackbird *Turdus merula*
- Magpie *Pica pica*
- Long-tailed tit *Aegithalos caudatus*
- Great tit *Parus major*
- Great spotted woodpecker *Dendrocopos major*
- Mallard *Anas platyrhynchos*
- Goldfinch *Carduelis carduelis*
- Woodpigeon *Columba palumbus*
- Willow warbler *Phylloscopus trochilus* *
- Oystercatcher *Haematopus ostralegus* *
- Sparrowhawk *Accipiter nisus* *
- Swift *Apus apus* *
- Mute swan *Cygnus olor* *



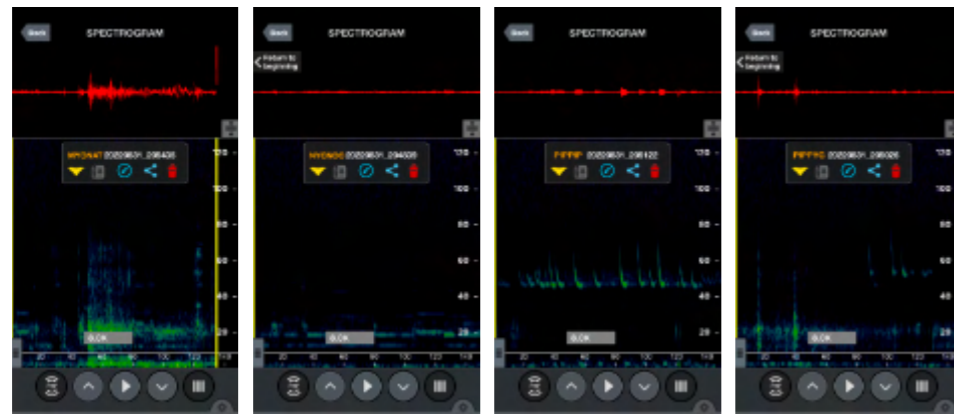
description		Yarrow		number	
date		12.10.22		width	
sign		Cheryl		height	
site		Church park		notes	
plot		quite to grow		planted	
collector		Cheryl		rebecca chesney	
PR		1		1	



description		wild carrot		number	
date		12.10.22		width	
sign		Cheryl		height	
site		Church park		notes	
plot		attracting flies		planted	
collector		Cheryl		rebecca chesney	
PR		1		1	



Other species recorded on the plot include a number of toads *Bufo bufo* (top left), field vole *Microtus agrestis* (top right) and four species of bat were recorded along the canal beside the plot in September 2022: Common pipistrelle *Pipistrellus pipistrellus*, Soprano pipistrelle *Pipistrellus pygmaeus*, Noctule *Nyctalus noctula* and Natterer's bat *Myotis nattereri* (images below show spectrograms of bat recordings).



The plot has been host to a number of walks and events in 2022:

Prospects Foundation Walking Festival in August 2022 - Canal Nature Walk with Rebecca Chesney (top image).

Bulb planting (snowdrops, bluebells, crocus and wood anemones) and celebration event in October 2022 (images left and below).

Bat Walk with Canal & River Trust ecologist Diane Rollin in September 2022 (opposite page, bottom image).





Management of the plot

Throughout the summer the grass surrounding the wildflower areas has been cut to a length where smaller flowers can thrive: daisy, clover, dandelion (right) etc.

The edges of the plot have been left as there are a number of established plants attracting pollinators already: ivy and brambles (below right), rosebay (below left), white dead-nettle.

In October 2022 a full cut of the whole plot was undertaken by Prospects Foundation (images above) and all cuttings raked and removed from the site. Locally sourced yellow rattle seeds were introduced to the wildflower plots. Yellow rattle is a parasitic plant and will help suppress the grasses in future seasons.



Rebecca Chesney www.rebeccachesney.com

Super Slow Way www.superslowway.org.uk

In Our Nature www.inournaturecic.co.uk

Prospects Foundation www.prospectsfoundation.org.uk

Habitat Aid www.habitataid.co.uk

Canal and River Trust www.canalrivertrust.org.uk

With thanks to:

- Chris Davison - Producer
- Fee's Butty Van
- Best Pneumatic Systems
- TAGI Display Systems
- Hollins High School & Let's Be Foundation
- Diane Rollin ecologist Canal and River Trust
- Gavin Renshaw - mural collaboration
- All the volunteers who gave up their time to help plant flowers and bulbs in all weathers: Jane and Pippa, John-Paul, Florian, Nick, Helen, Marcus.

Copyright © 2022 Rebecca Chesney

No part of this publication may be reproduced, stored in a retrieval system, or transmitted in any form or by any means, electronic, mechanical, photocopying, recording, or otherwise, without the written permission of the publisher.

Photo credits: page 7 bottom left and page 15 middle: Gavin Renshaw
All other photos: Rebecca Chesney

